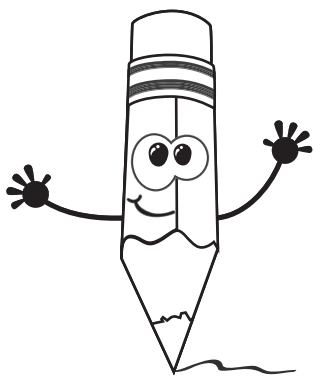


# Look OUT!

for kids®



Window and Door Home Safety Workbook for Kids



## A Note to Parents!

Children see the world's wonder before they may see its dangers. By following a few basic safety tips, you can help prevent injuries related to windows and doors.

Windows and doors do more than provide views, sunlight and breezes – they can also save lives.

They serve as important escape or rescue points from the home in case of an emergency, such as a fire. It is important to look at how we use these products in our homes.

Window and door safety education is important for both children and adults. As parents, family members and caregivers, we have the greatest stake in our children's safety. At Andersen, we believe that companies that make products for the home should also help increase safety awareness in the home.



Please review and practice these safety measures in your home.

- Close and lock windows
- Position beds and other furniture away from windows.
- Keep window and door treatments (blinds, cords, drapes, etc.) out of children's reach.
- Consider installing window opening control devices or window guards.
- Keep patio doors, storm doors and entrance doors locked.
- Consider window placement when landscaping your home. Plant shrubs under windows.
- Develop a family escape plan.
- Check your smoke detectors to make sure they are in working condition.
- Consider adding a carbon monoxide detector.



# Window Safety Messages!

isNcet c/rNees

Don't depend on \_\_\_\_\_

rcihdNLe

to keep \_\_\_\_\_ from falling out of

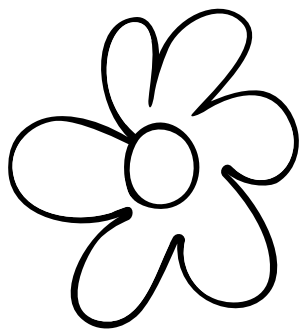
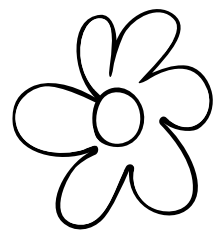
windows. They are designed to provide

tisNscE

ventilation and to keep \_\_\_\_\_

out of the home. They will not

prevent a child's fall.

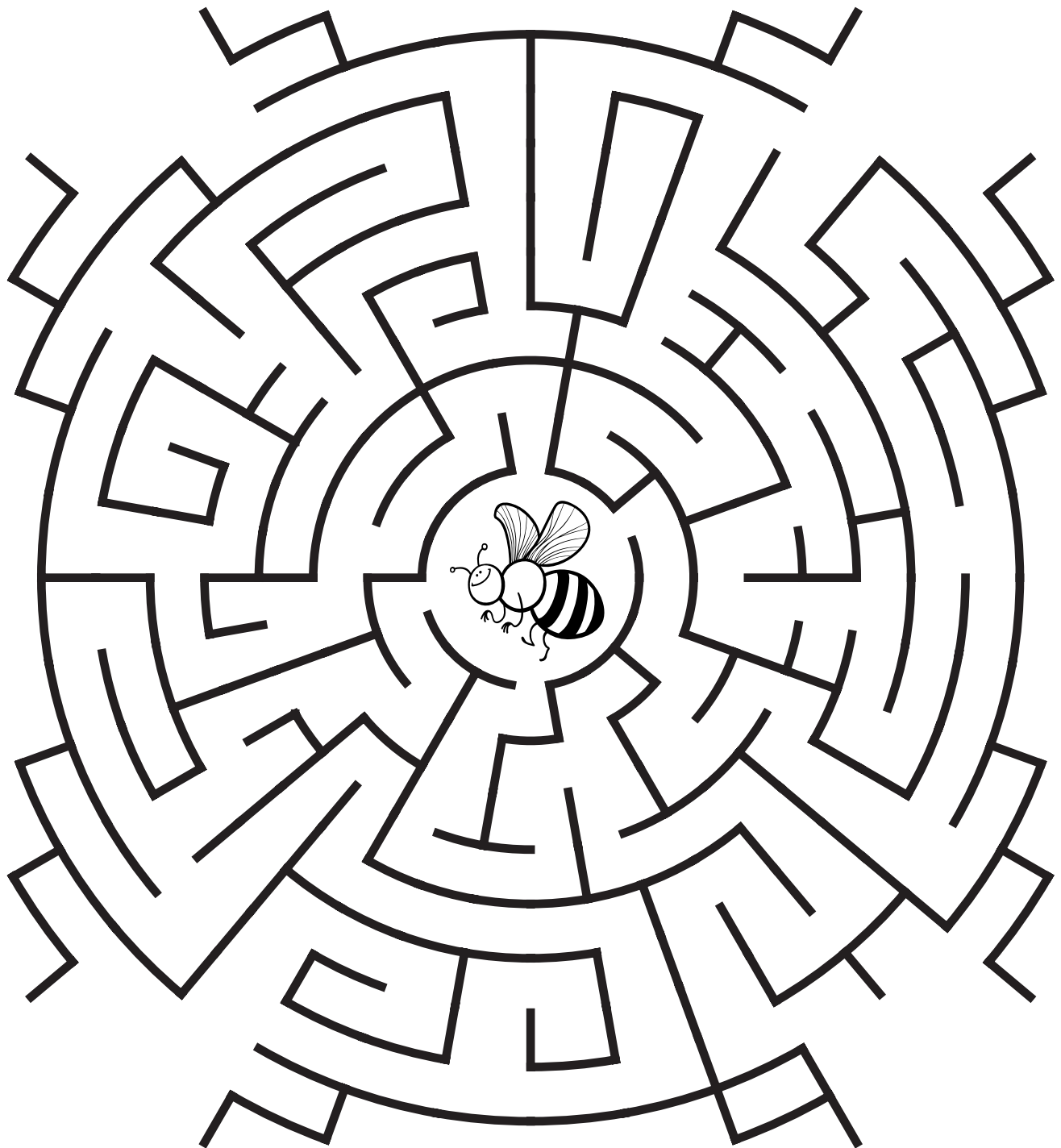


Look  
OUT!  
for kids®

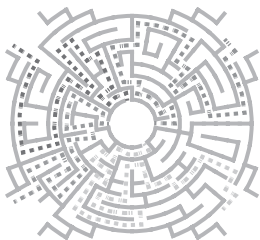
1

Answer: 1. insect screens 2. children 3. insects

It's not always easy to find your way-  
**Practice your escape plan with your family today!**



**2**



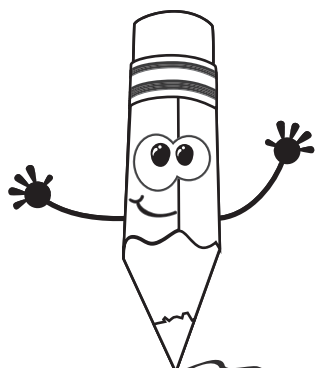
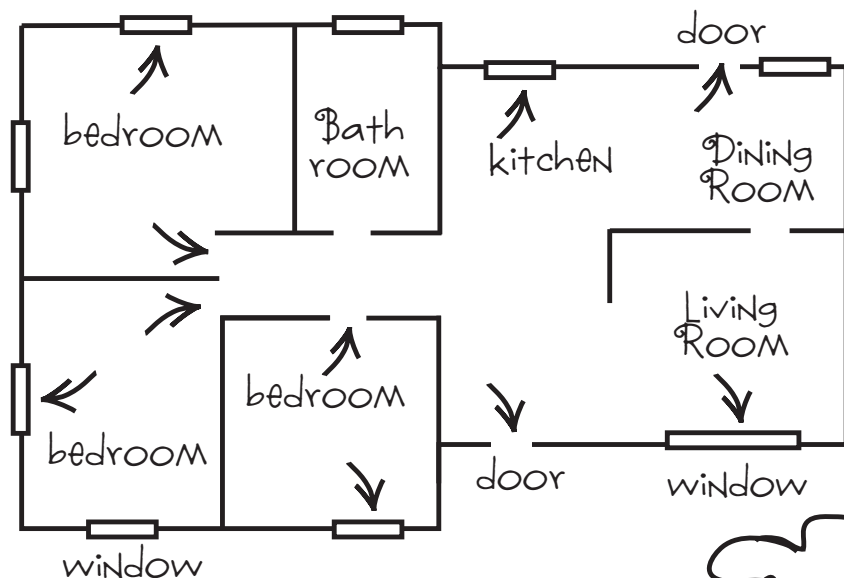
**Get out quickly, Get out carefully.**

Make sure you have two ways to escape from EVERY room in case one is blocked by fire or smoke. A window may be the second way out. Plan a fire drill to practice both escape routes.

**A fire drill is not a race.**

# draw your plan

Sit down with your family and develop an escape plan. Make sure everyone in the family knows how to get out of the house in an emergency.



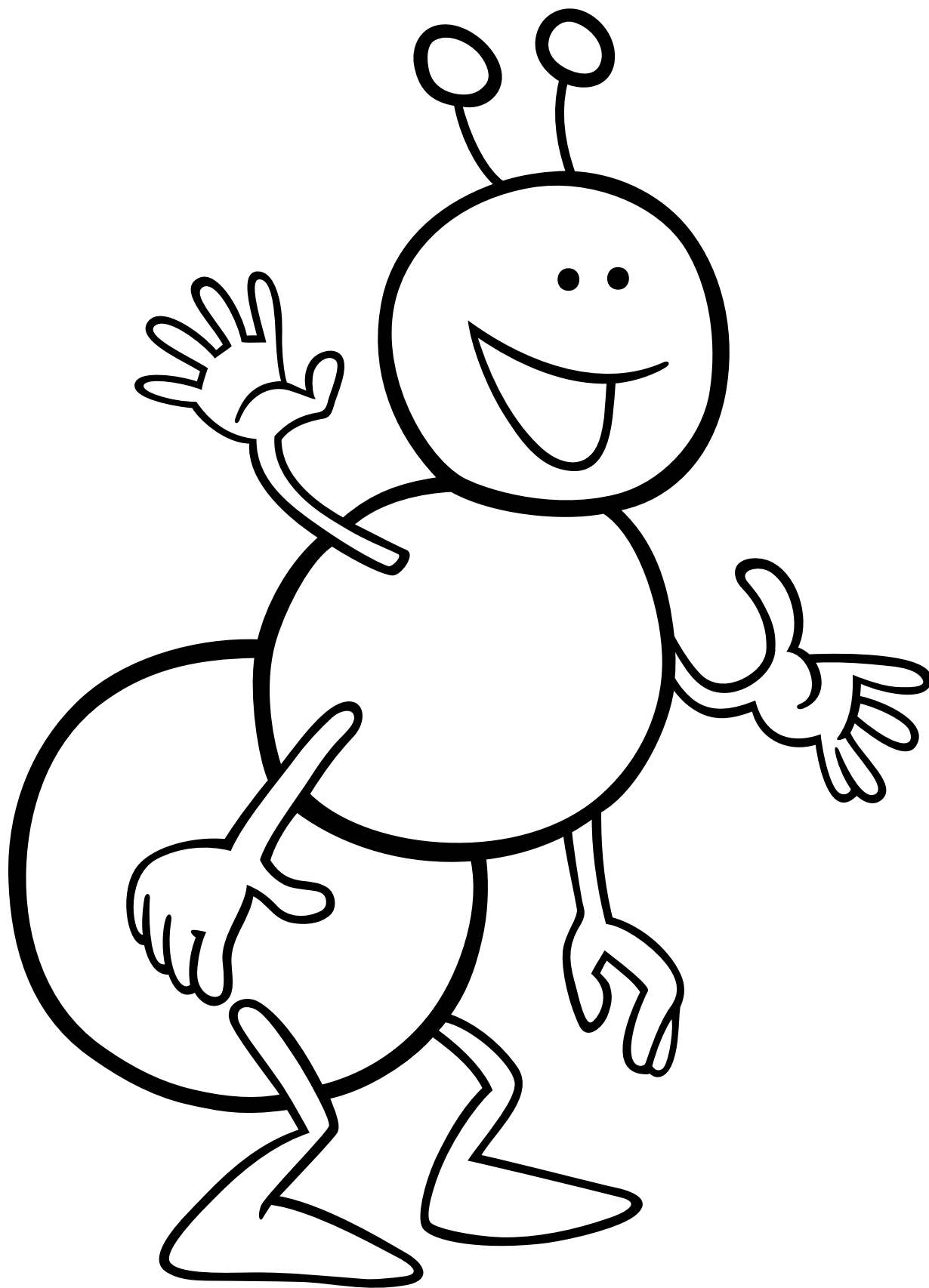
## Escape Plan Tips!

- Include **two (2)** ways to escape from every room in case one is blocked by smoke.
- A **window or door** is an alternative means of escape.
- Have your family **practice it**, get out safe!
- Make sure you have identified a meeting place outside.



**Look  
OUT!**  
for kids®

**3**



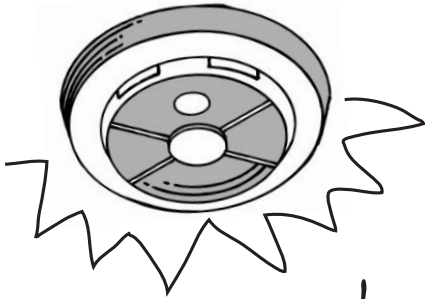
4



**Don't play or climb  
near windows!**

# Window Safety Word Scramble!

Use the letters below to fill in the blanks.



M

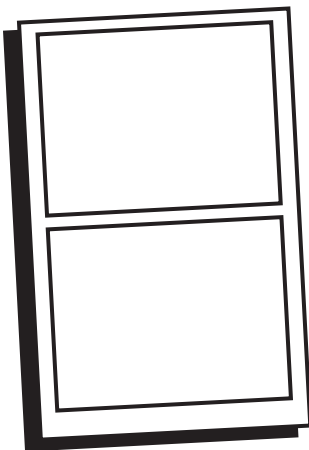
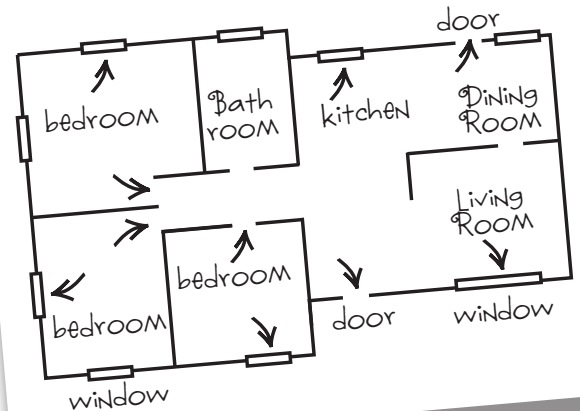
d

{ HINT: It warns you when there is a fire. }

a

N

{ HINT: Develop and practice this with your family. }



N

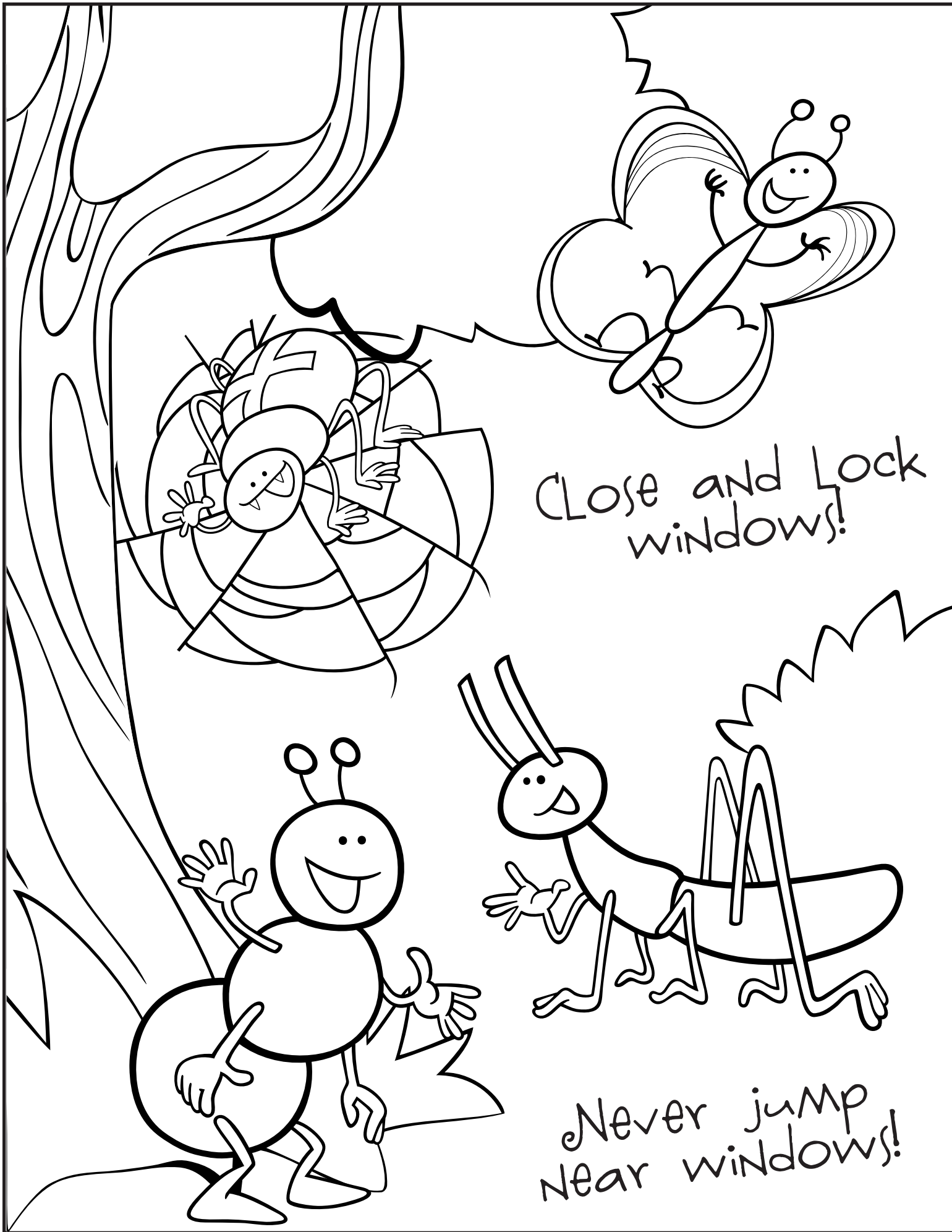
{ HINT: If the doorway is blocked, this is a second way out. }

a s o e o r t p o e c e  
c l w i e d e w k p t s

Look  
OUT!  
for kids®

5

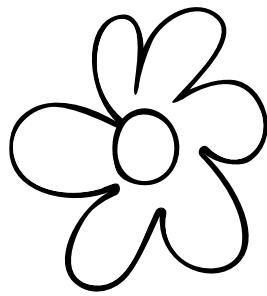
Answers: 1. smoke detector, 2. escape plan, 3. window



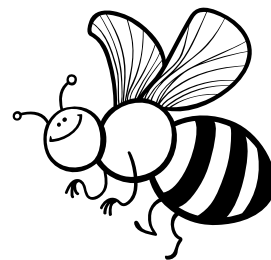
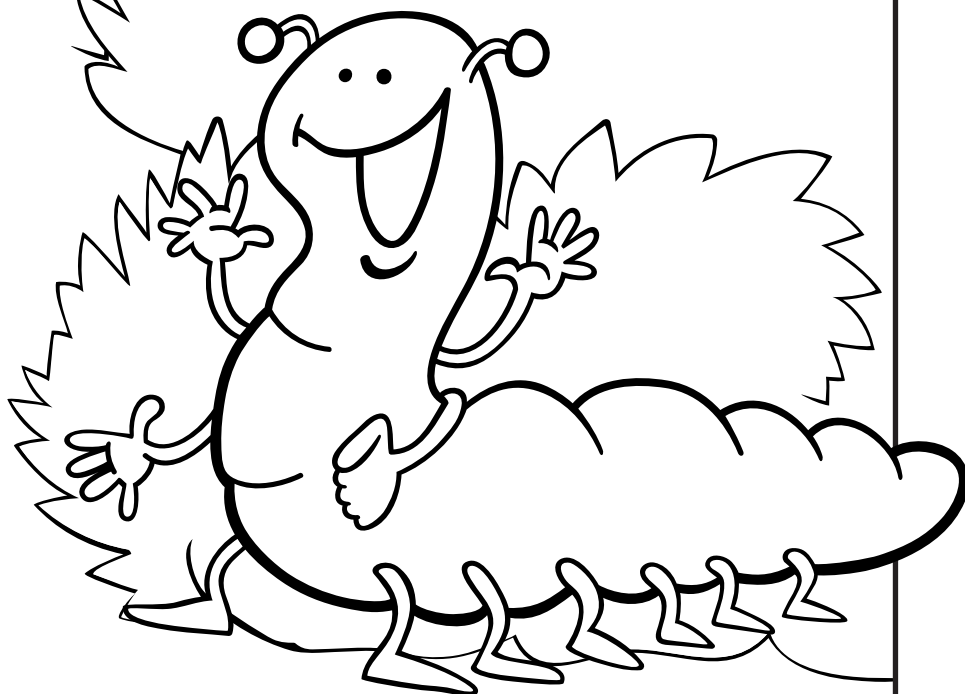
Close and Lock  
windows!

Never jump  
near windows!

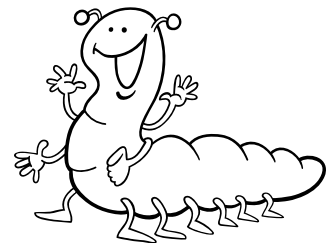
Please don't Lean  
ON insect screens!



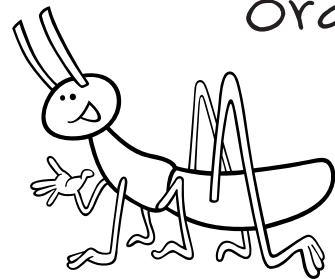
Practice your  
escape plan!



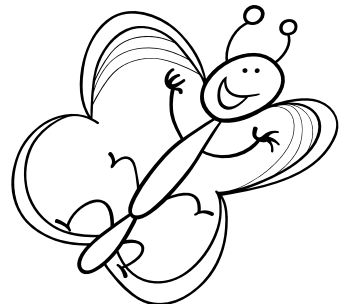
yellow



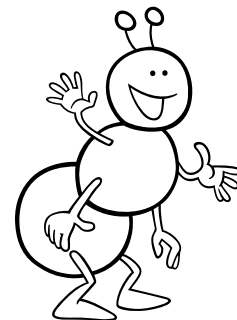
orange



green



red



purple



black

# Window Safety Word Search!

Find the words below.

M	P	D	Q	I	S	S	J	C	O	W	C	R	Y	T
I	A	A	Y	C	I	N	H	A	O	L	O	O	E	U
S	F	M	T	D	S	I	E	D	S	T	B	B	E	O
A	O	A	M	I	L	B	N	E	C	T	F	E	K	K
W	S	F	M	D	O	I	V	E	R	E	H	I	I	O
O	V	D	R	I	W	D	T	A	M	C	I	X	E	O
X	Q	E	J	Q	L	E	O	D	L	X	S	J	E	L
C	N	J	Y	F	D	Y	Z	O	M	M	D	X	M	B
D	I	X	K	E	F	Z	I	D	R	D	A	F	E	S
Y	F	D	K	Z	K	K	E	F	Y	H	F	I	R	F
A	L	O	E	S	C	A	P	E	P	L	A	N	G	G
Q	M	N	E	S	R	E	D	N	A	N	F	T	E	G
S	N	U	H	Y	M	X	H	X	B	F	N	A	N	M
X	W	Z	S	W	G	L	C	X	U	D	E	G	C	J
I	N	S	E	C	T	X	S	I	F	H	C	V	Y	Y

ANDERSEN

CHILDREN

EMERGENCY

ESCAPE PLAN

FAMILY

INSECT

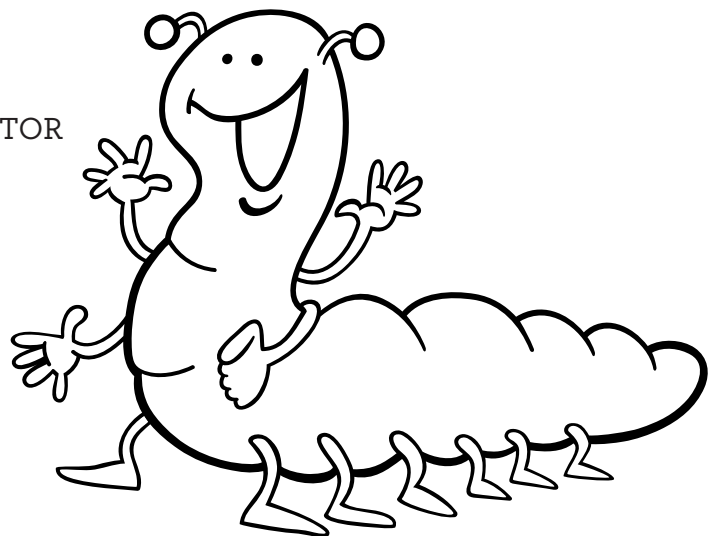
LOOK OUT

PATIO DOOR

SCREENS

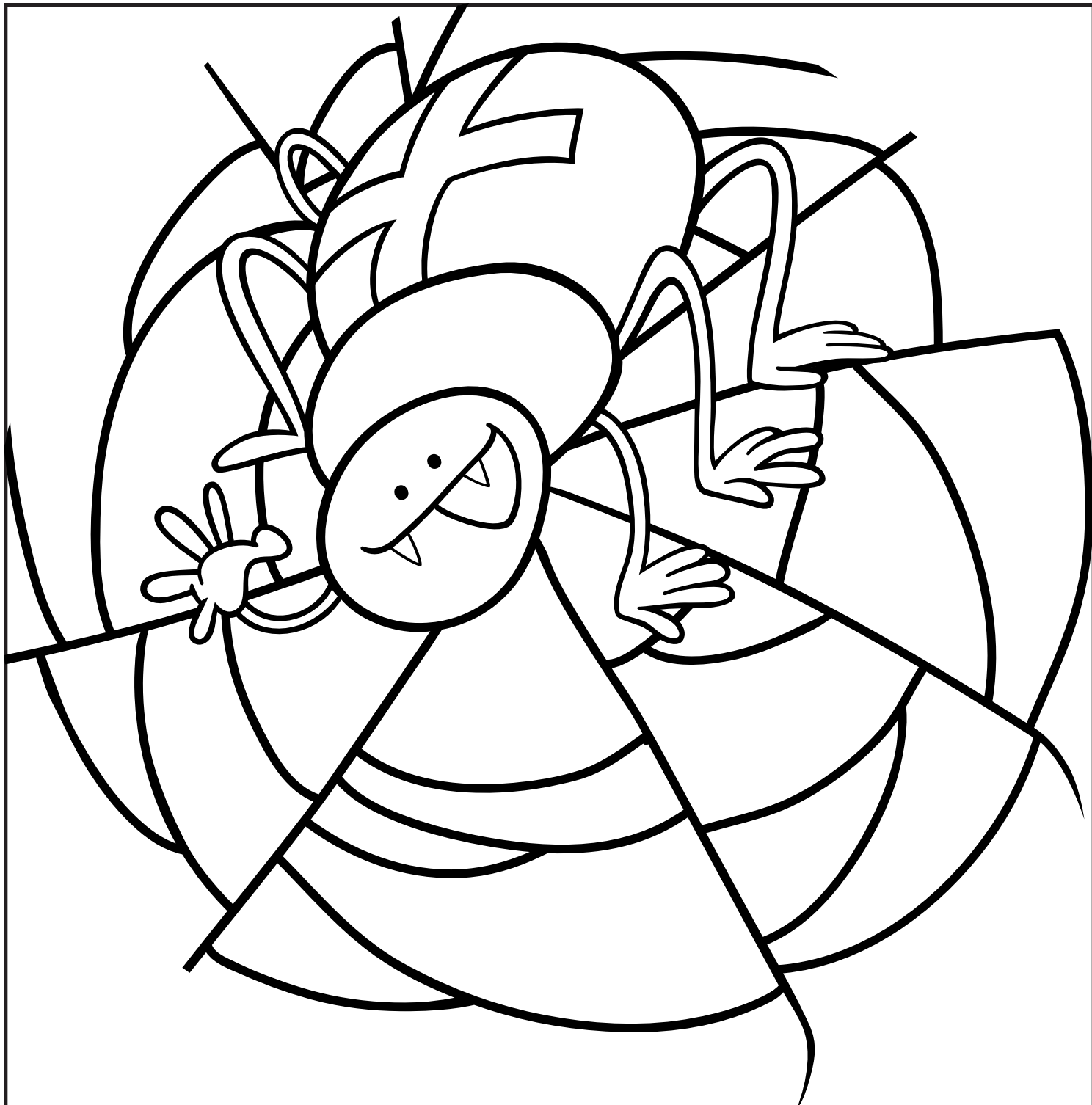
SMOKE DETECTOR

WINDOW



8



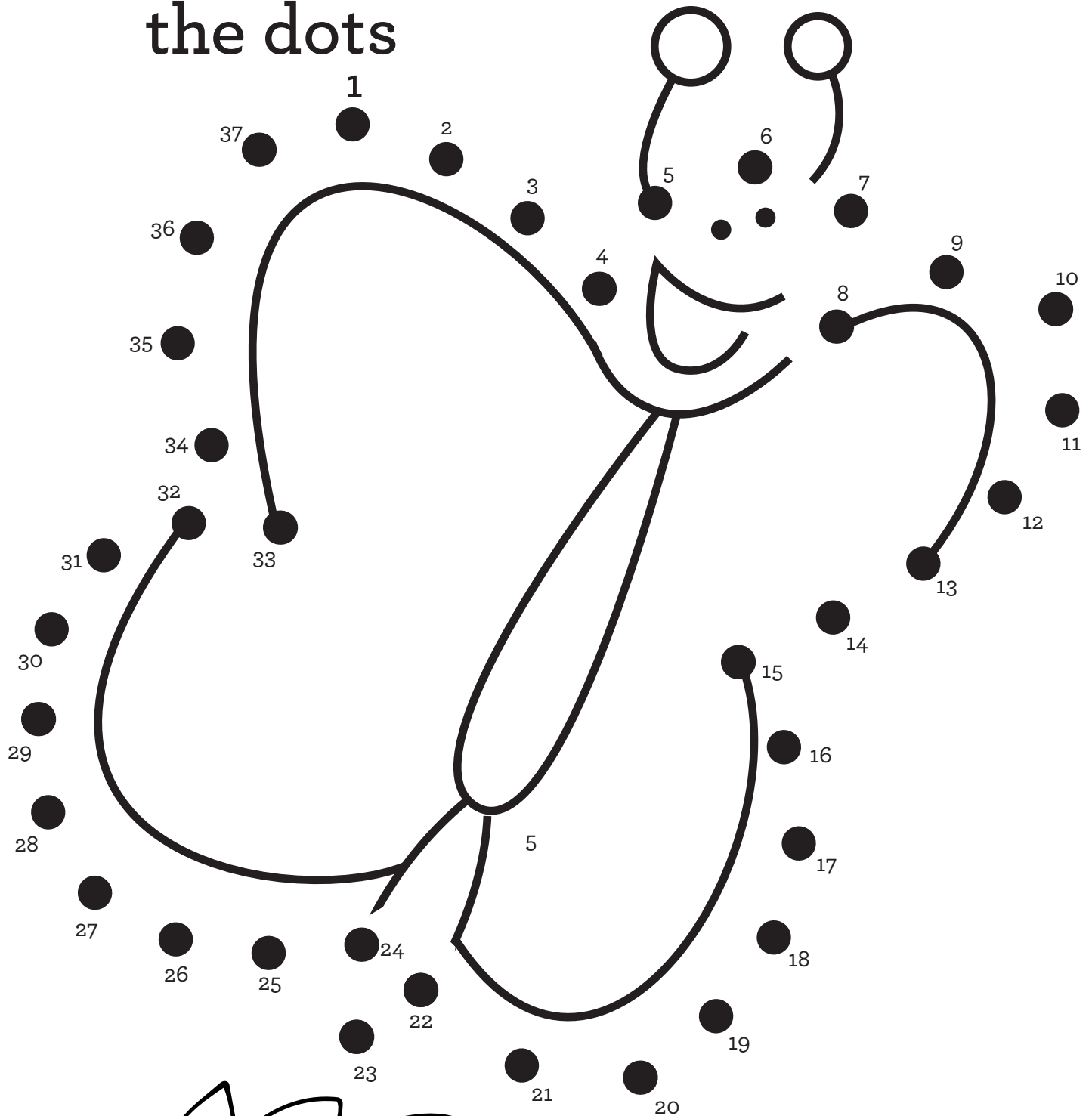


**Insect Screens  
keep bugs out,  
not kids in!**

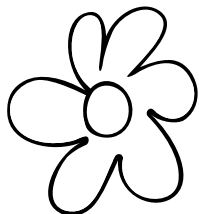
**Look  
OUT!**  
for kids®

**9**

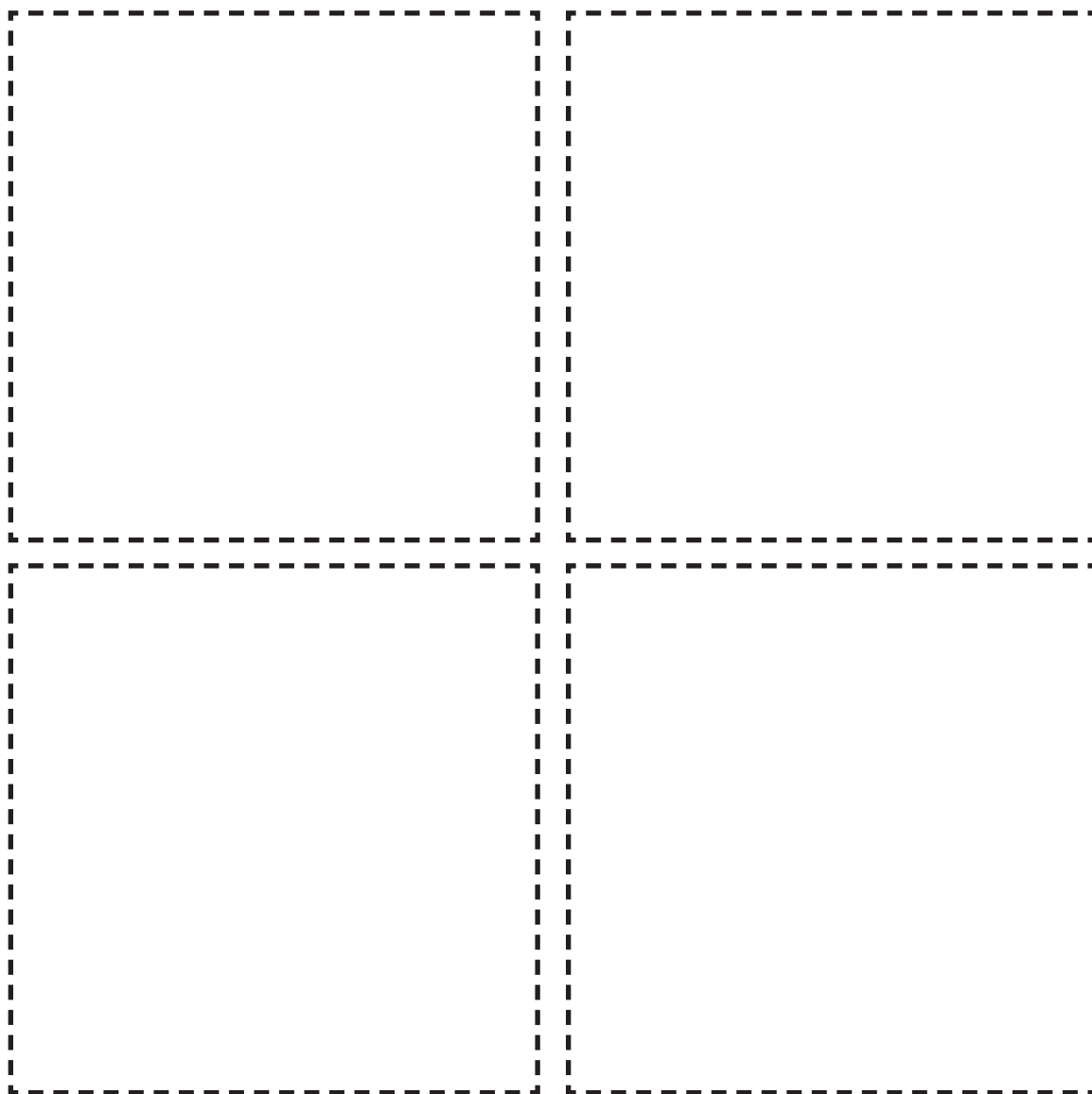
# connect the dots



10



**Play Safe!**  
**Keep furniture away  
from windows.**



**Look at the window, remember and practice!**

Write in four safety tips you've learned.

**LOOK  
OUT!**  
for kids™

**11**

Answer: 1. Don't play or climb near windows. 2. Practice your escape plan. 3. Screens keep bugs out, not children in. 4. Don't put furniture near windows.

# Two Ways Out!

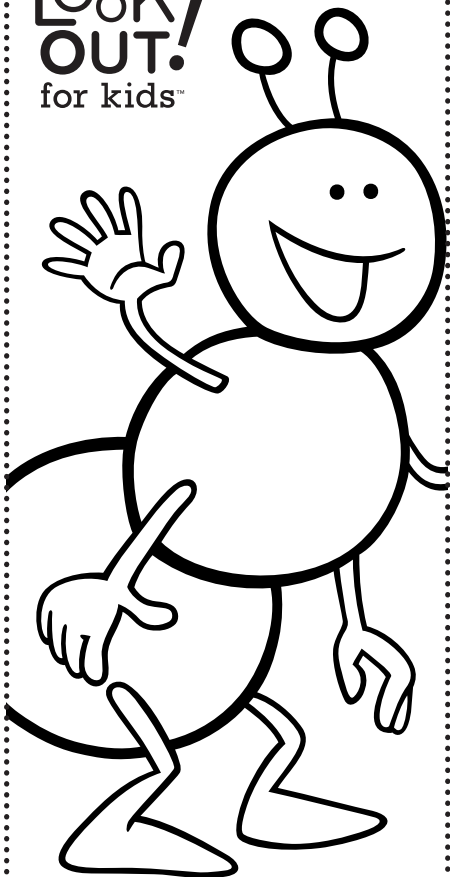
Find two ways out, trace over the dotted lines.  
Remember a window or door is an alternative means of escape.



# safety bookmarks

Color, Clip, Save and Remember!

**Look  
OUT!**  
for kids™



## **Play Safe!**

**Keep beds and  
all furniture  
away from  
windows.**

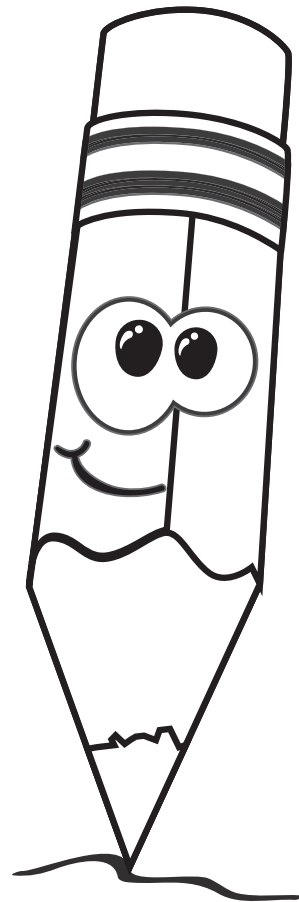
**Look  
OUT!**  
for kids™



## **Insect Screens**

**keep bugs out,  
not kids in!**

**Look  
OUT!**  
for kids™



## **Create an Escape Plan.**

**Practice it  
with your family!**

If you would like additional copies of this workbook or more resource information,  
call 1-800-313-8889 or email [LOFK@andersencorp.com](mailto:LOFK@andersencorp.com)

